

藏傳鐵印選粹錄

周紹良



序

西藏印章之著錄，以余陋見，蓋肇端於清末吳大澂所輯《十六金符齋印存》一書，寥寥二十鈕，時人莫能知其詳。嗣後以日照王獻唐氏之于璽印博學，其著《五燈精舍印話》亦曾無一言及此。甫及近年，始見《西藏歷代藏印》一書有專門論述，然所論皆歷代官印之屬，以存世數量論，藏傳私用鐵印蔚為大宗，是書猶未能備。

周藹聯《西藏紀游》云「番人亦用圖章，篆鑄鐵爲之，光澤可愛，圓者居多，上刻番字，糾結如蟲」，所言即爲藏傳鐵印。如周氏所言，藏傳印章質地率爲精鐵，印鈕常作佛光寶焰狀，神秘莫測；另有一種鏤雕爲祥雲蓮瓣，虺龍奔走者，盡逞巧工之能事，誠不可多座之藝術珍品。

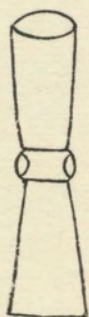
藏傳鐵印有兩面者，有單面者，印面有刻文字者，有刻圖案者，其文字奇詭難辯，可識者少，揣想其中必多真言、梵咒之類。圖案之屬則多爲卍字、法螺、金剛杵等密宗法器形象，與藏傳密宗佛教有莫大關係，其于密宗佛教儀軌中使用詳情，值得研討。

藏傳鐵印雕刻藝術無一不精美之至，以此一端，即應引起廣泛重視，更何況其尚能有裨益于文史研究。鑒于目前資料刊布尚少，謹以所見，鈐拓印面，摹繪鈕制，萃爲斯編。然世之博雅君子，將如所言，欲闡斯學之奧蘊者，或亦有取諸。

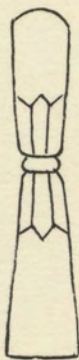
丙子冬

編者識于京華

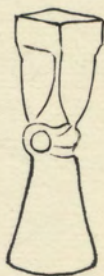
藏傳鐵印選粹錄



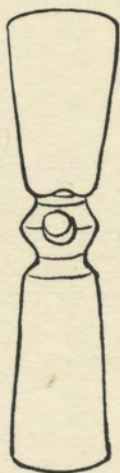
藏傳鐵印選粹錄



藏傳鐵印選粹錄



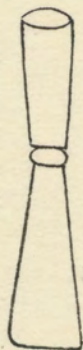
藏傳鐵印選粹錄



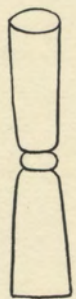
藏傳鐵印選粹錄



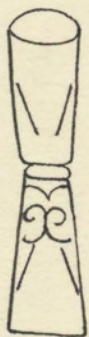
藏傳鐵印選粹錄



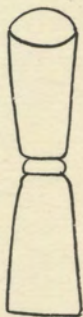
藏傳鐵印選粹錄



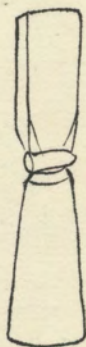
藏傳鐵印選粹錄



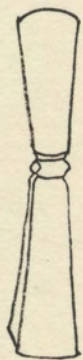
藏傳鐵印選粹錄



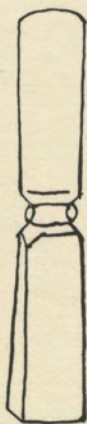
藏傳鐵印選粹錄



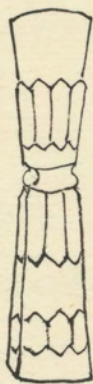
藏傳鐵印選粹錄



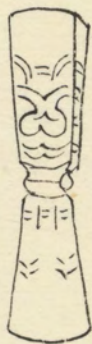
藏傳鐵印選粹錄



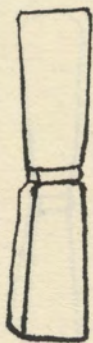
藏傳鐵印選粹錄



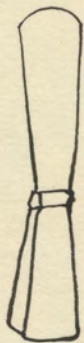
藏傳鐵印選粹錄



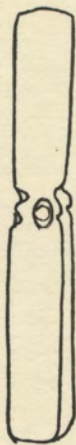
藏傳鐵印選粹錄



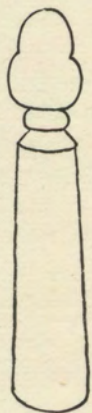
藏傳鐵印選粹錄



藏傳鐵印選粹錄



藏傳鐵印選粹錄



藏傳鐵印選粹錄



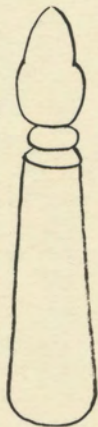
藏傳鐵印選粹錄



藏傳鐵印選粹錄



藏傳鐵印選粹錄



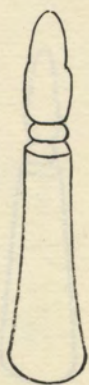
藏傳鐵印選粹錄



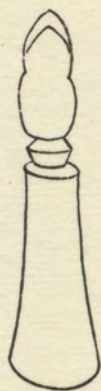
藏傳鐵印選粹錄



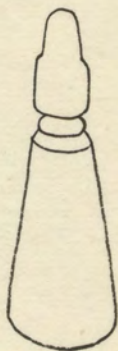
藏傳鐵印選粹錄



藏傳鐵印選粹錄



藏傳鐵印選粹錄



藏傳鐵印選粹錄



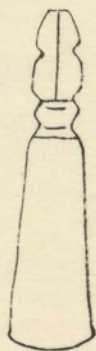
藏傳鐵印選粹錄



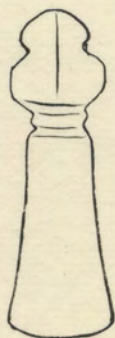
藏傳鐵印選粹錄



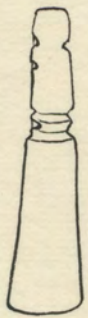
藏傳鐵印選粹錄



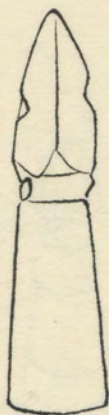
藏傳鐵印選粹錄



藏傳鐵印選粹錄



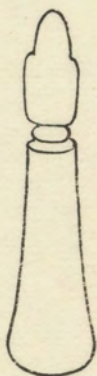
藏傳鐵印選粹錄



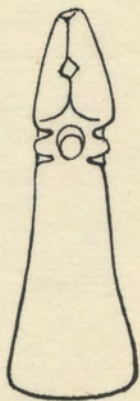
藏傳鐵印選粹錄



藏傳鐵印選粹錄



藏傳鐵印選粹錄



藏傳鐵印選粹錄



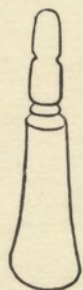
藏傳鐵印選粹錄



藏傳鐵印選粹錄



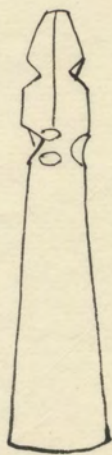
藏傳鐵印選粹錄



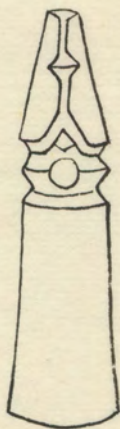
藏傳鐵印選粹錄



藏傳鐵印選粹錄



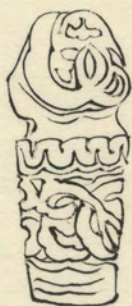
藏傳鐵印選粹錄



藏傳鐵印選粹錄



藏傳鐵印選粹錄



藏傳鐵印選粹錄



藏傳鐵印選粹錄



藏傳鐵印選粹錄

